

5 The Landscape and Seascape Classification

Introduction

- 5.1 This section provides an overview of the Arnside and Silverdale Landscape and Seascape Character Types/Areas identified through this study (illustrated in **Figure 5.1** and **Figure 5.2**). More detailed maps of the Arnside and Silverdale landscape and seascape character types/areas are included within the Character Descriptions in **Chapter 6**, **Chapter 7** and **Chapter 8**. Within the Arnside & Silverdale AONB, two seascape types and four landscape character types have been identified with a further three landscape character types forming part of the setting of the AONB.

Summary of the Landscape and Seascape Classification

- 5.2 The overall approach for undertaking the landscape and seascape classification has first been to identify the Landscape and Seascape Character Types within the AONB and the areas that form the setting to it. This approach, which is in line with that used for most of the region's landscape character assessments, is considered the most appropriate for the AONB, the qualities of its landscape and the scale or 'grain' at which the assessment work has been undertaken. In addition, this Character Type led approach is based on latest published guidance and current good practice for this kind of work.
- 5.3 The identified Landscape and Seascape Character Types have a distinct and relatively homogenous composition and pattern of natural and man-made attributes. Landscape Character Types are generic in form and, as can be seen below and in Figure 5.1, occur in different parts of the AONB. These Landscape and Seascape Character Types have been identified within and relate to the contexts of the existing national and regional character assessments undertaken by Natural England and Lancashire and Cumbria County Councils.
- 5.4 The Character Types identified in this study represent a much finer grain of assessment than that provided in the national and county level assessments. However, it should be noted that the character types do 'nest' within the framework provided by the existing national and county level assessments.
- 5.5 For each Character Type, information is provided on the key characteristics, valued attributes, forces for change, landscape and seascape condition, sensitivity and capacity for change together with guidelines for managing development and conserving/enhancing character.
- 5.6 Finally, information is provided on the location and key characteristics of the Character Areas which nest within each Character Type. Landscape and Seascape Character Areas have a distinct and recognisable pattern of natural and man-made features which, whilst unmistakably recognisable as those of the Character Type that they occur within, are geographically unique.
- 5.7 Within this classification, the Landscape and Seascape Character Types are divided into the following:
- **Seascape:** The AONB seascapes combine extensive areas of Morecambe Bay with the River Kent and the River Keer estuaries. The dynamic and changing coastline includes mud and sand flats, and saltmarshes, bounded in places by shingle bays, rising to low cliffs with caves. The transition between land and sea is marked by characteristic windswept and stunted oak woodland such as that which hugs the coast south of Arnside. The Seascape Character Types are:
 - Seascape Character Type A: Intertidal flats
 - Seascape Character Type B: Bay Saltmarshes and Lagoons
 - **Transitional and lowland landscapes:** The lowland landscapes of the AONB comprise a diversity of low mosses and wetland landscapes contrasting with enclosed limestone pastures, and areas of historic parkland. Evidence of a long and historic land use is seen in the field patterns, such as ridge and furrow exposed when the sunlight is low, and the remains of towers, including Arnside Tower, which are local land marks. Features also include the Leighton Moss RSPB Reserve and Gait Barrows National Nature Reserve, where the birds and wildlife attract many visitors. The transitional and lowland Landscape Character Types are:
 - Landscape Character Type C: Lowland Moss
 - Landscape Character Type D: Coastal Limestone Pasture
 - Landscape Character Type E: Inland Pasture and Parkland

- **Wooded limestone hills:** Wooded limestone hills and pavements rise above the lowland landscapes. Inland woodlands are rich and verdant, characterised by the highly distinctive flat bedding planes of the limestone pavements amongst which many of them grow. Natural crags and outcrops have been exposed by historic and present day quarrying for limestone, including Trowbarrow (now a Local Nature Reserve and popular climbing destination), Middlebarrow which has recently been restored and Sandside where extraction continues. Arnside is a Victorian seaside resort on the lower slopes of Arnside Knott, overlooking the distinctive Arnside Viaduct across the Kent Estuary, mirrored by Grange-over-Sands on the west side. The wooded limestone hills landscape character type is:
 - Landscape Character Type F: Wooded Limestone Hills and Pavements
- **Landscape character types forming the setting of the AONB:** The setting of the AONB includes both those areas from where the AONB can be seen, i.e. when looking towards the AONB, and areas which are seen from the AONB, when looking out from within its boundaries. The landscape character types forming the setting of the AONB are:
 - Landscape Character Type G: Drumlin Farmland
 - Landscape Character Type H: Low Coastal Drumlins
 - Landscape Character Type I: Lowland Valley and Coastal Margins

5.8 The landscape and seascape classification is outlined in Table 5.1.

Table 5.1 The Landscape and Seascape Classification

CHARACTER TYPES	CHARACTER AREAS
Seascape	
A Intertidal Flats	A1 East Morecambe Bay A2 Kent Estuary, Milnthorpe Sands and Hazelslack Marsh
B Bay Saltmarshes and Lagoons	B1 Warton Marshes
Transitional/Lowland Landscapes	
C Lowland Moss	C1 Arnside and Silverdale Mosses C2 Leighton Moss and Barrow Scout C3 Hale and White Mosses C4 Holme/Burton and Hilderstone Mosses C5 River Keer/Warton Floodplain
D Coastal Limestone Pasture	D1 Storth Pasture D2 Far Arnside Coastal Pasture D3 Silverdale Coastal Pasture D4 Warton Coastal Pasture
E Inland Pasture and Parkland	E1 Dallam Park and Beetham E2 Leighton Beck Valley E3 Leighton Park E4 Yealand Hill Fringe
Wooded Limestone Hills	
F Wooded Limestone Hills and Pavements	F1 Arnside Knott/Arnside Park F2 Middlebarrow/Eaves Wood F3 Heald Brow/Burton Well F4 Warton Crag/Grisedale Wood F5 Hyning and Cringlebarrow F6 Gait Barrows/ Thrang End F7 Fairy Steps /Whin Scar
Types Forming the Setting of the AONB	
G Drumlin Farmland	G1 Milnthorpe/Beetham Drumlin Farmland G2 Borwick Drumlin Farmland
H Low Coastal Drumlins	H1 Carnforth Coastal Drumlins
I Lowland Valley and Coastal Margins	I1 Milnthorpe Marsh I2 Meathop Marsh

Figure 5.1 Arnside & Silverdale AONB LSCA Character Types

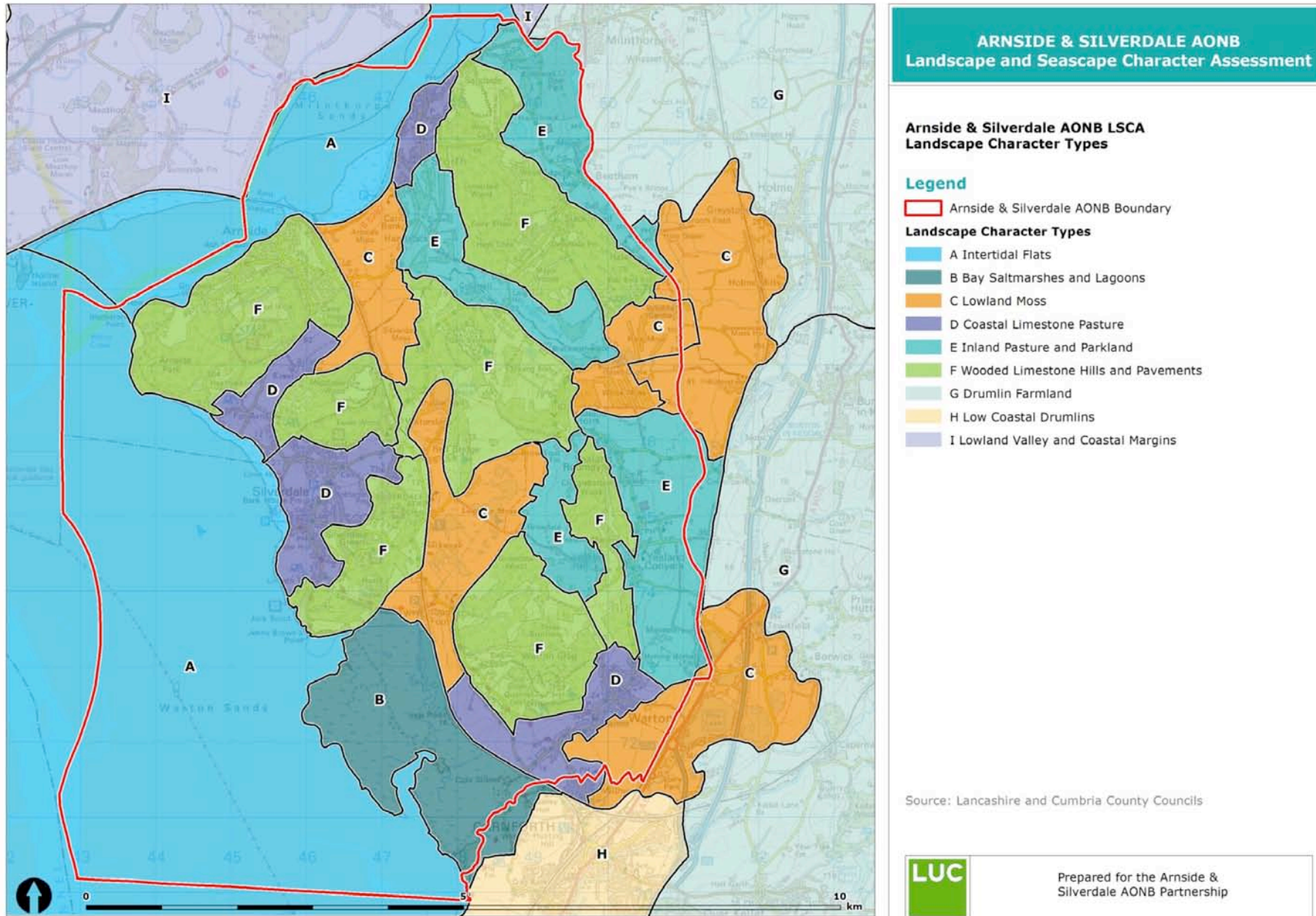
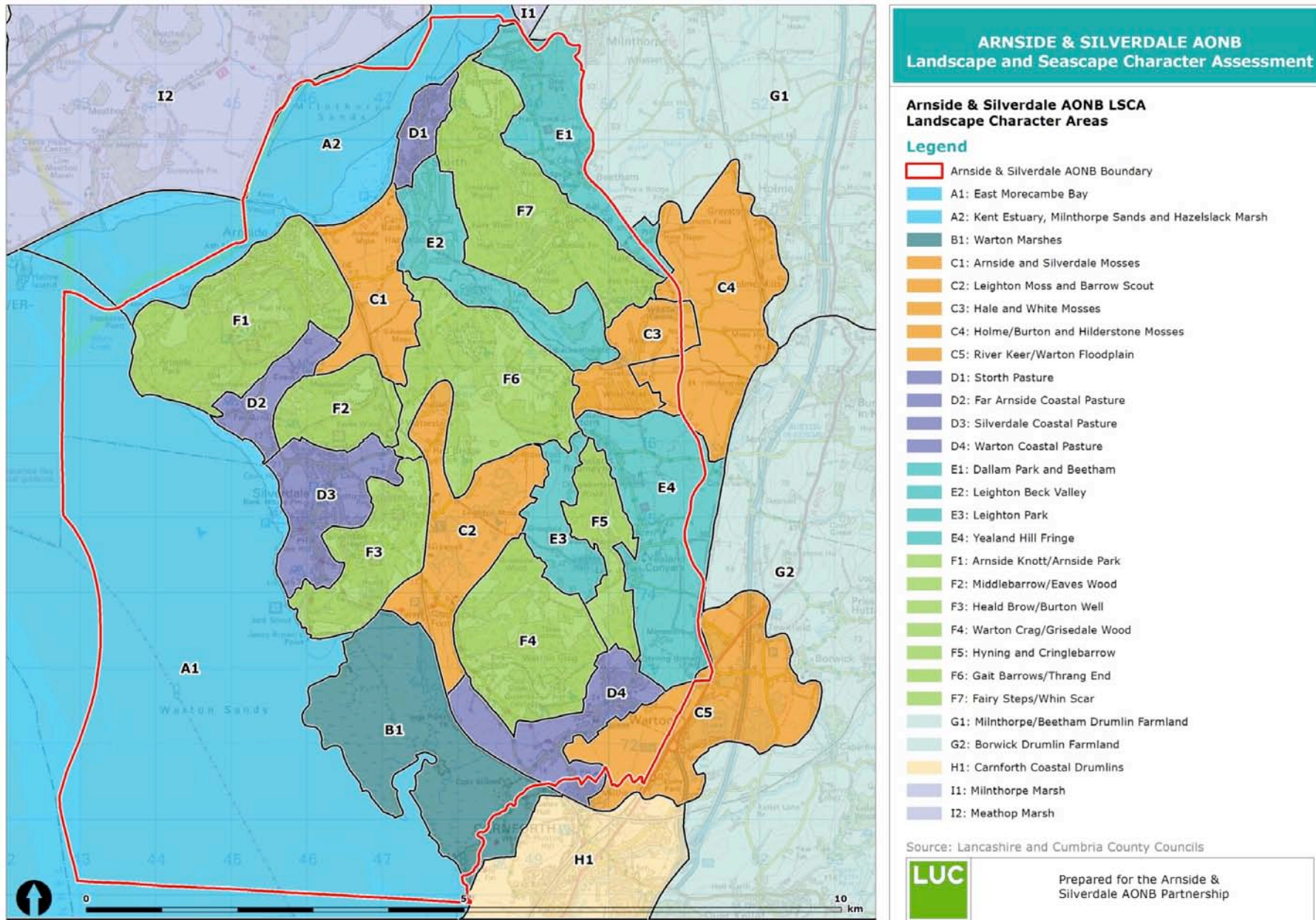


Figure 5.2 Arnside & Silverdale AONB LSCA Character Areas



The Format of the Landscape and Seascape Character Descriptions

5.9 The character descriptions are structured as follows:

Location and Character Type Description

5.10 A detailed description is provided of the key components of the character type and their location together with a supporting location map and photographs depicting key characteristics.

Key Characteristics of the Character Type

5.11 The key characteristics of the character type specific to the Arnside & Silverdale AONB and the areas that form the setting to it are identified and listed.

Evaluation

5.12 A list of the valued attributes identified through the opinions gathered through the workshops and through field observations is given.

5.13 Valued attributes and qualities that may be particularly sensitive to change are recorded.

Forces for Change

5.14 The current key drivers for ongoing change as identified through desk and field work, consultation, workshops and district level studies are described.

Current Landscape or Seascape Condition

5.15 A concise description of the intactness of the key components of the Landscape or Seascape Character Type is provided to explain how the overall current condition is perceived.

Sensitivity and Capacity for Change

5.16 The inherent sensitivity of the Character Type is described and a judgement provided on its capacity to accommodate change without significant adverse effects on key characteristics.

Guidelines

5.17 Broad guidelines are outlined that guide thinking on how the existing Character Type may be protected, managed, and planned in the future, taking into account the Character Type's condition, sensitivity and capacity and the identified forces for change. These were agreed with the steering group and integrated with existing county landscape studies (Cumbria and Lancashire).

Landscape and Seascape Character Areas

5.18 The locations and descriptions for individual Landscape and Seascape Character Areas within each Character Type are detailed in each section.